




Exhibit C (page 1 of 4): Inspection Procedures


REFERENCE: PRB-207512 Square D Brand General Duty Safety Switch 30/60A, 120/240Vac, NEMA 3R

Inspection procedure regarding the following catalog numbers manufactured within date codes 1401 – 1803 (January 1, 2014 – January 18, 2018). The safety switch can potentially remain energized when the handle is in the "OFF" position. This poses a potential risk of an **Electric shock or Electrocutation hazard** to customers. Refer to Table 1: Impacted Catalog Numbers for impacted references.

Table1: Impacted Catalog Numbers

DU222RB	DU322RBUP	D221NRBUP	DU221RBUP
DU222RBUP	D211NRB	D321NRB	CD321NRB
DU321RB	D211NRBCP	D321NRBCP	DU321RBCP
DU321RBUP	D221NRB	D321NRBUP	DU322RBCP
DU322RB	D221NRBCP	DU221RB	

 **DANGER**



HAZARD OF ELECTRIC SHOCK, EXPLOSION, OR ARC FLASH

Do not turn handle of switch to be inspected on or off unless all steps of this procedure are followed.

Failure to follow these instructions will result in death or serious injury.

1. Apply appropriate personal protective equipment (PPE) and follow safe electrical work practices. See NFPA 70E.
2. Never operate energized switch with door open. Keep door fastened.
3. Always use properly rated voltage sensing device at all line and load fuse clips to confirm switch is off
4. Always verify that a device is de-energized before working on it. This must be done with a properly rated voltage sensing device as stated above. This step would detect a safety switch that is nonconforming.

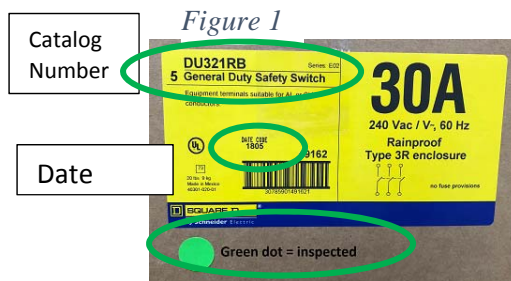
Failure to follow these instructions during inspection will result in death or serious injury.



Exhibit C (page 2 of 4): Inspection Procedures

REFERENCE: PRB-207512 Square D Brand General Duty Safety Switch 30/60A, 120/240Vac, NEMA 3R
Safety Switch: Not Installed Inspection Procedure:

1. If safety switch has a green dot near packaging label it has previously been inspected. No further action required. See Figure 1
2. If safety switch is still packaged, locate the catalog number and date code. See Figure 1
3. If safety switch is included in affected catalog numbers (Table 1) and date code is within 1401 – 1803, complete inspection form: www.schneider-electric.us/gdss-inspectionform.
 - a. If safety switch is outside date code range, or not affected catalog numbers no further action is required.



4. Remove safety switch from original manufacture package. Open safety switch cover
5. Ensure handle is in the 'ON' position and blades closed. See Figure 2.

Figure 2

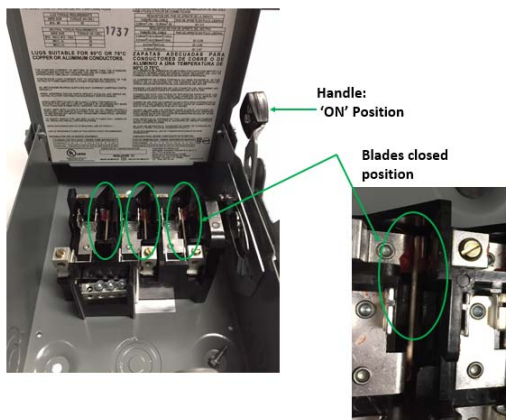
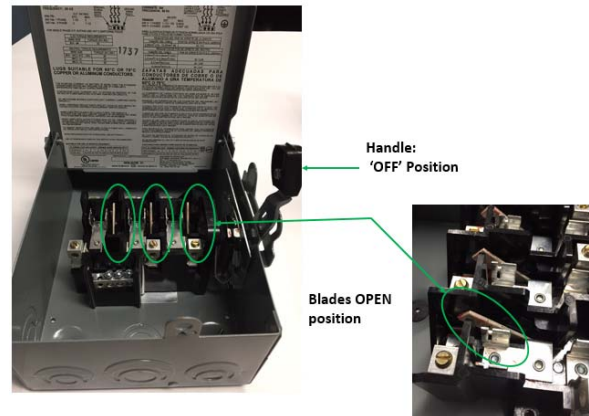


Figure 3



6. Cycle handle to 'OFF' position and confirm blades are 'OPEN.' See Figure 3. No further action is required.
 - a. If blades stay in 'CLOSED' position (See figure 4) do not put into service. Return safety switch to Schneider Electric for replacement (See Exhibit B for return process).

Figure 4

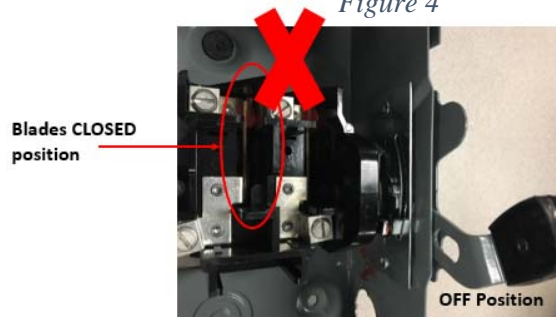




Exhibit C (page 3 of 4): Inspection Procedures

REFERENCE: PRB-207512 Square D Brand General Duty Safety Switch 30/60A, 120/240Vac, NEMA 3R

Safety Switch: Installed, but not energized Inspection Procedure:

1. Verify safety switch is a General Duty, 120/240V or 240V, 30 or 60A by viewing front label (See Figure 5) and/or confirming catalog number on the side label of the safety switch (See Figure 6). Date code confirmation not required if installed.

Figure 5



Figure 6



2. Once confirmed safety switch is not energized, open safety switch cover.
3. Ensure handle is in the 'ON' position and blades closed (Figure 2)
4. Cycle handle to 'OFF' position and confirm blades are 'OPEN.' (Figure 3)
 - a. If blades are in the 'OPEN' position, no further action required.
 - b. If blades stay in 'CLOSED' position (Figure 4), uninstall safety switch. Return safety switch to Schneider Electric for replacement.
5. Complete inspection form: www.schneider-electric.us/gdss-inspectionform.

Safety Switch: Installed, and energized Inspection Procedure:

1. Verify safety switch is a General Duty, 120/240V or 240V, 30 or 60A by viewing front label (See Figure 5) and/or confirming catalog number on the side label of the safety switch (See Figure 6). Date code confirmation not required if installed.
2. If the safety switch has been operated previously and the load has been verified to be deenergized, no additional action is required. Complete inspection form: www.schneider-electric.us/gdss-inspectionform.
3. If the safety switch is not providing critical power and can be safely shut off without damaging equipment, and/or causing injuries; cycle the switch to 'OFF' position. Verify if downstream loads are deenergized.
 - a. If downstream device(s) are deenergized, cycle the safety switch back to 'ON' position. No further action is required.
 - b. If downstream device(s) are still energized, contact Schneider Electric Recovery Administration at 1-877-672-1953 and complete inspection form: www.schneider-electric.us/gdss-inspectionform. The safety switch can temporarily remain in use; however, it cannot be used to deenergized a load or shut down equipment.
 - i. Mark the safety switch (outside near handle) with a red tag or card containing the following information, "Danger – This safety switch does not open and disconnect power. Schneider Electric has been contacted and replacement is scheduled."
 - ii. The safety switch will be required to be taken out of service and replaced.



Exhibit C (page 4 of 4): Inspection Procedures

Attachment 1 – Inspection Form for “General Duty 30 & 60A, 120/240V Safety Switch”

This inspection form can be completed via the following link: www.schneider-electric.us/gdss-inspectionform

Results of Inspection					
Total Quantity Inspected	Quantity verified as operational	Quantity that was not operational	<i>Complete if non-operational unit was detected:</i> Product has been marked per instruction and 1-888-778-2733 has been called for replacement (circle response)		
			Yes No		
Location of Equipment (please verify)					
Company Name or Building Owner					
Street Address					
City		Prov / State		Postal Code	
Contact Information					
Contact Name					
Title					
Company Name or Building Owner					
Phone		Email			

Next Steps:

Please return this form: via email to Schneider-recovery.canada@schneider-electric.com