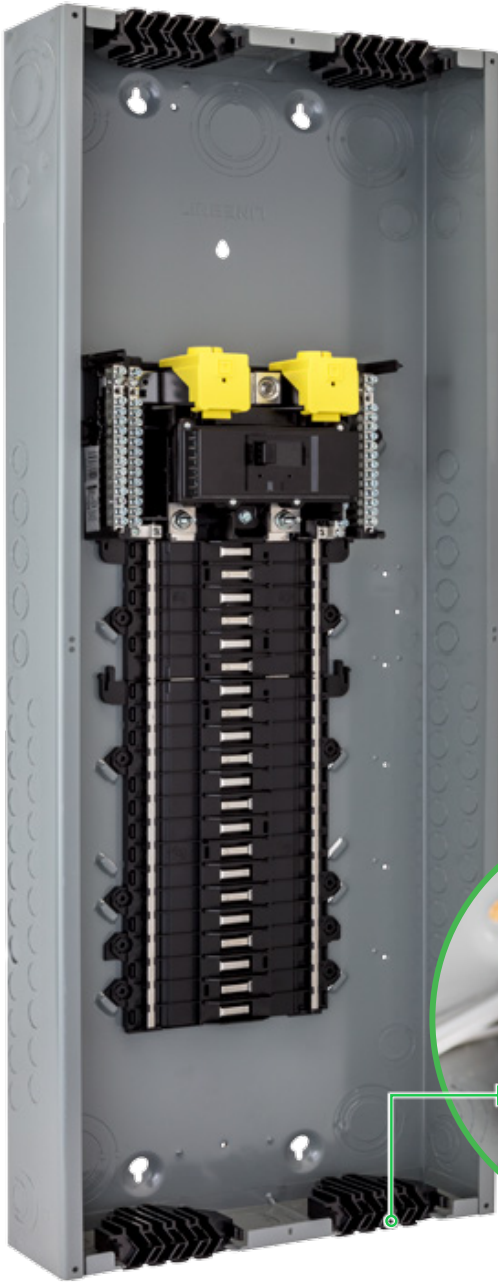


QO Plug-on Neutral Load Centers with Qwik-Grip Wire Management System

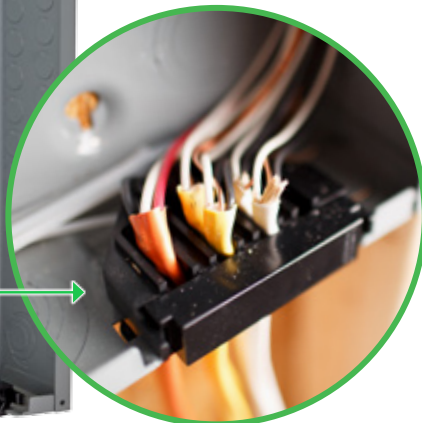


Square D QO Plug-on Neutral Load Centers with Qwik-Grip

Electrical contractors will appreciate not having to remove knockouts, install wire connectors and blindly pull wire into the load center versus the ability to slide wires from the front with the Qwik-Grip wire management system. A quick bend of the wire using the wire bend guide on the Qwik-Grip insert and the wire easily slides into the slot. Once done, snap on the Qwik-Grip shield to keep the wires behind the router for a secure, code compliant installation. Qwik-Grip, a state of the art wire management system, allowing you to move on the next job quicker.

Features and benefits of Plug-on Neutral Load Centers with Qwik-Grip Wire Management System

Feature	Benefit
Qwik-Grip advantage	<ul style="list-style-type: none"> • Simple, easy to use and speeds up installation time • Eliminates the need for most knock-outs and connectors, and feeds from the front making wire management easy to see • Retaining clip snaps in place for secure wire retention



Qwik-Grip Wire Management System



QO Plug-on Neutral Load Centers with Qwik-Grip provides:

- Easy to use wire management system
- Simplifies NM-B wire installation
- Speeds up rough-ins
- Accommodate more wires than knockout end-walls
- Great for new construction, remodels or service upgrades
- UL Listed

www.schneider-electric.us/QG



**dealers
electrical
supply**

www.dealerelectrical.com

Life Is On



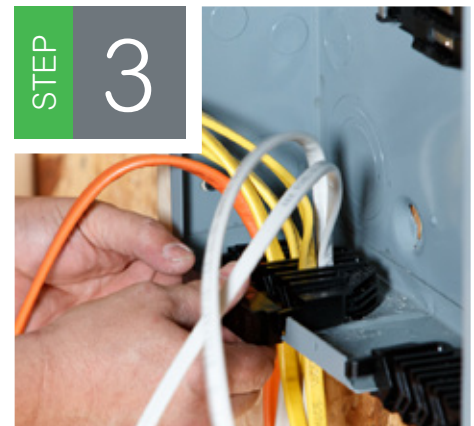
Installation is fast and easy with Qwik-Grip



Remove the needed Qwiklet tabs



Slide the wire into the slot



Snap on the Qwik-Grip shield when all circuits are installed

Qwik-Grip Catalog Numbers	Mains Rating	Spaces	Max. 1P Circuits	Description
Convertible Mains – Factory-Installed Main Lugs – 65kA Short Circuit Rating – Copper Bus, QOM1 Main Frame Size, Convertible to Main Breaker				

QO124L125PQG	125 A	24	24	(1) QO Qwik-Grip Plug-on Neutral load center with factory-included (1) PK15GTA ground bar, (1) LK100AN Lug Kit, and (1) PKQGA Qwik-Grip Assembly Kit
QO124L125PQGCV				(1) QO Qwik-Grip Plug-on Neutral load center with factory-included (1) PK15GTA ground bar, (1) LK100AN Lug Kit, (3) QO120, (2) QO230 and (1) PKQGA Qwik-Grip Assembly Kit
QO130L125PQG		30	30	(1) QO Qwik-Grip Plug-on Neutral load center with factory-included (1) PK15GTA ground bar, (1) LK100AN Lug Kit, and (1) PKQGA Qwik-Grip Assembly Kit

Convertible Mains – Factory-Installed Main Lugs – 65kA Short Circuit Rating – Copper Bus, QOM2 Main Frame Size, Convertible to Main Breaker				
---	--	--	--	--

QO130L200PQG	200 A	30	30	(1) QO Qwik-Grip Plug-on Neutral load center with factory-included (1) PK15GTA ground bar, (1) LK100AN Lug Kit, and (1) PKQGA Qwik-Grip Assembly Kit
QO142L225PQG	225 A	42	42	(1) QO Qwik-Grip Plug-on Neutral load center with factory-included (1) PK23GTA ground bar, (1) LK100AN Lug Kit, and (1) PKQGA Qwik-Grip Assembly Kit

Convertible Mains – Factory-Installed Main Circuit Breaker – 22kA Short Circuit Current Rating – Copper Bus, QOM2 Main Frame Size, Convertible to Main Lugs or Main Circuit Breaker				
---	--	--	--	--

QO142M200PQ	200 A	42	42	(1) QO Qwik-Grip Plug-on Neutral load center with factory-included (1) PKQGA Qwik-Grip Assembly Kit
QO142M200PQCV				(1) QO Qwik-Grip Plug-on Neutral load center with factory-included (1) QOC42UF cover, (3) QO120, (2) QO230, and (1) PKQGA Qwik-Grip Assembly Kit
QO130M200PQ		30	30	(1) QO Qwik-Grip Plug-on Neutral load center with factory-included (1) PKQGA Qwik-Grip Assembly Kit

Catalog Number	Name	Description
Accessories		
PKQGS	Qwik-Grip replacement Shield	(1) Qwik-Grip shield
PKQGF	Qwik-Grip fillers	(12) Qwik-Grip Fillers
PKQGI	Qwik-Grip replacement insert	(1) Qwik-Grip insert
PKQGA	Qwik-Grip Assembly Kit	(4) Qwik-Grip shields, (12) Qwik-Grip fillers

Contact your dealers salesperson for additional information

Schneider Electric

800 Federal Street
Andover, MA 01810
888 SQUARED (888-778-2733)



**dealers
electrical
supply**

www.dealerelectrical.com

Life Is On



YOUR LOCAL AUTHORIZED SQUARE D PREMIER DISTRIBUTOR